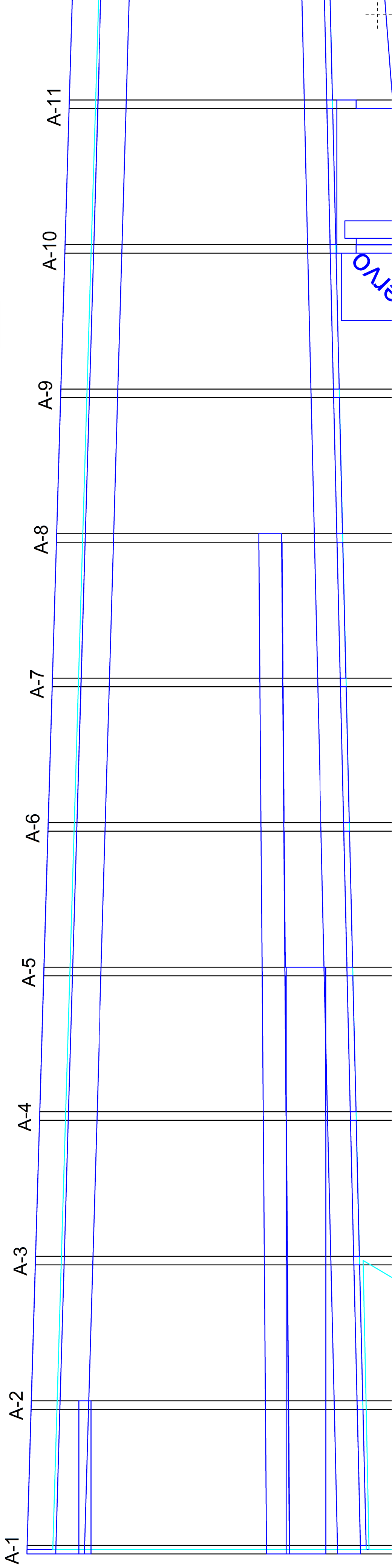
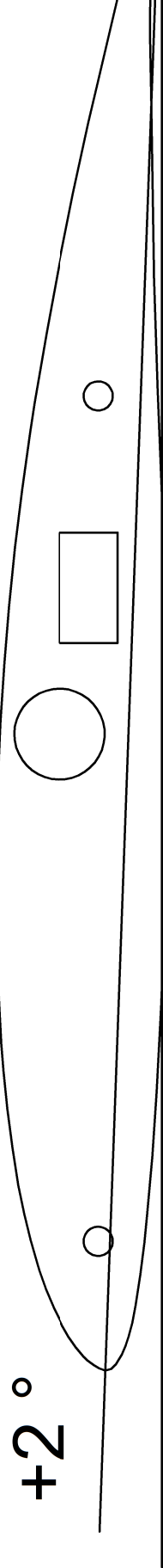


# Capsta

## Profil Wurzelribbe (+2°)

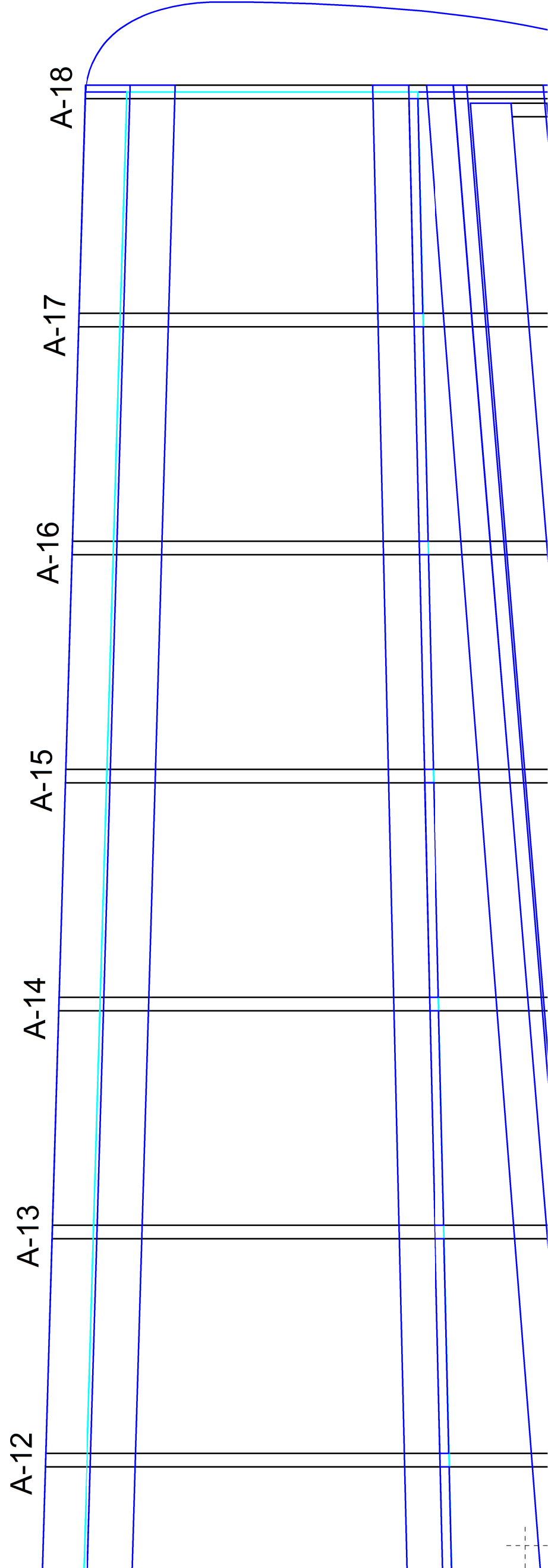
|                            |                |
|----------------------------|----------------|
| Technischen Daten:         |                |
| Spannweite:                | 1856 mm        |
| Länge:                     | 1002 mm        |
| Gewicht:                   | 1925 gr.       |
| Vorgeschlagene Ausrüstung: |                |
| Motor:                     | D2642/ 3400 KV |
| EDF:                       | 70 mm          |
| ESC:                       | 80A            |
| Akku:                      | 4S/3600mAh     |
| Servos:                    | 4x 20-30gr     |



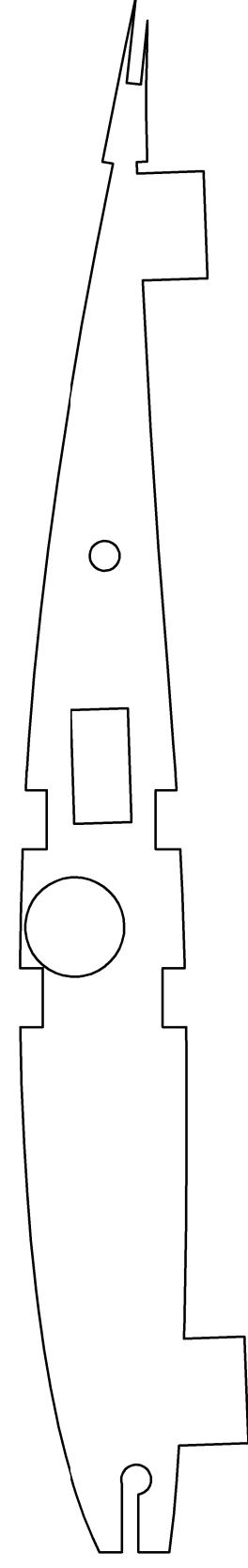
# un - EDF Segler

Profil Ribbe Flügelspitze (+1°)

Verwindung -1°

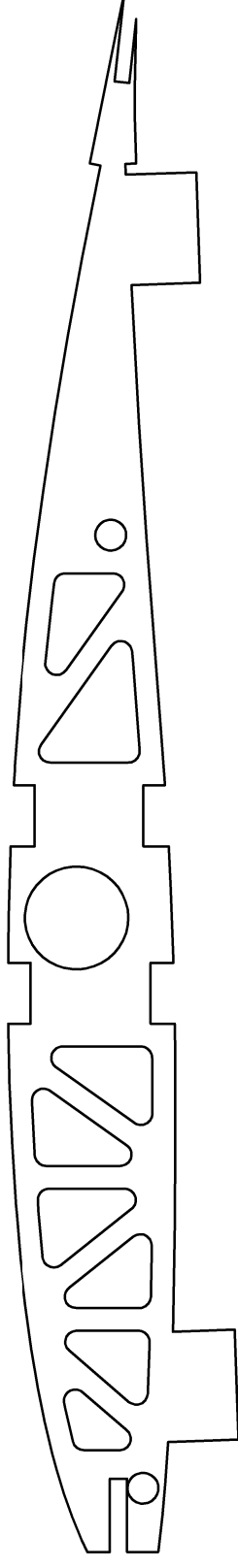


Wurzelrippe - triplex 3 mm

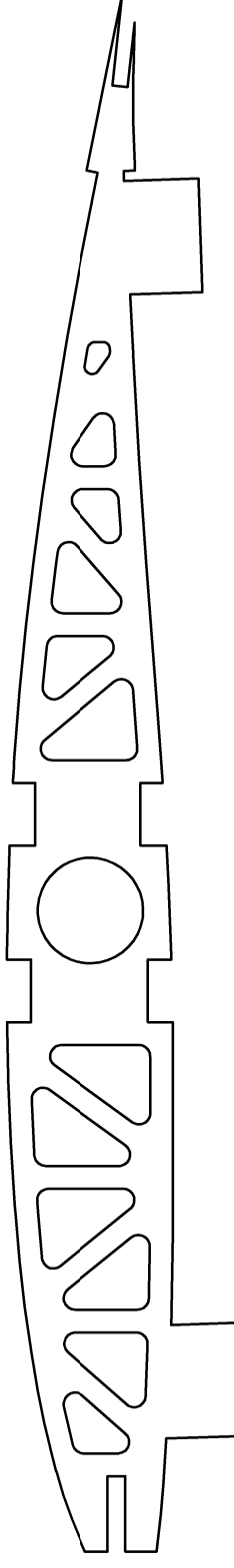


A-1

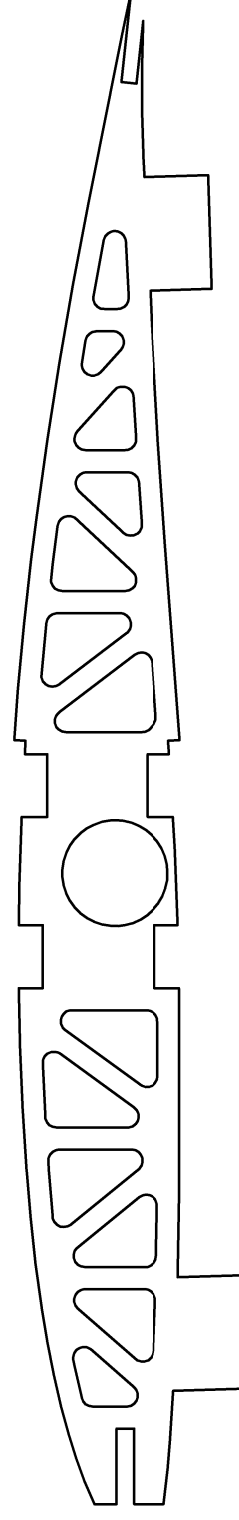
Restlichen Rippen- Balsa 3 mm



A-2



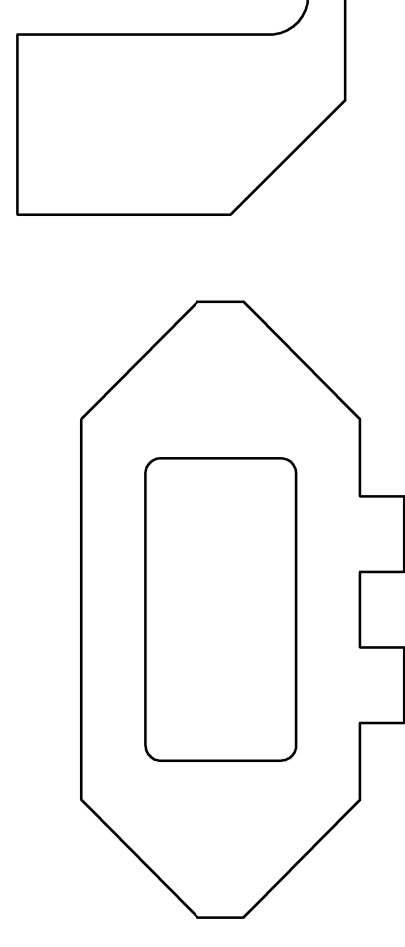
A-3



A-4

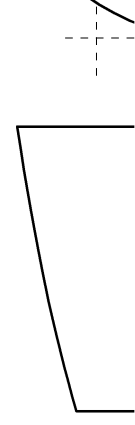
Spanten 1,2,3

Spant 1



Rumpfplatte

Ansicht von hinten mit



2,3,5,6,7 Balsa 6 mm

Spant 4 triplex 3 mm

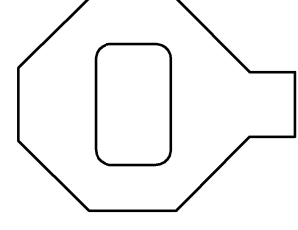
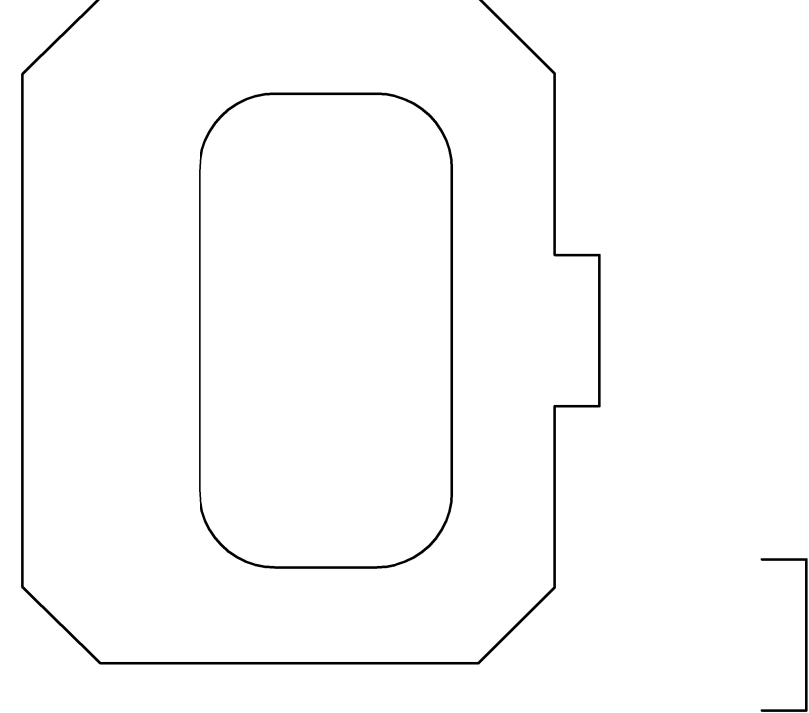
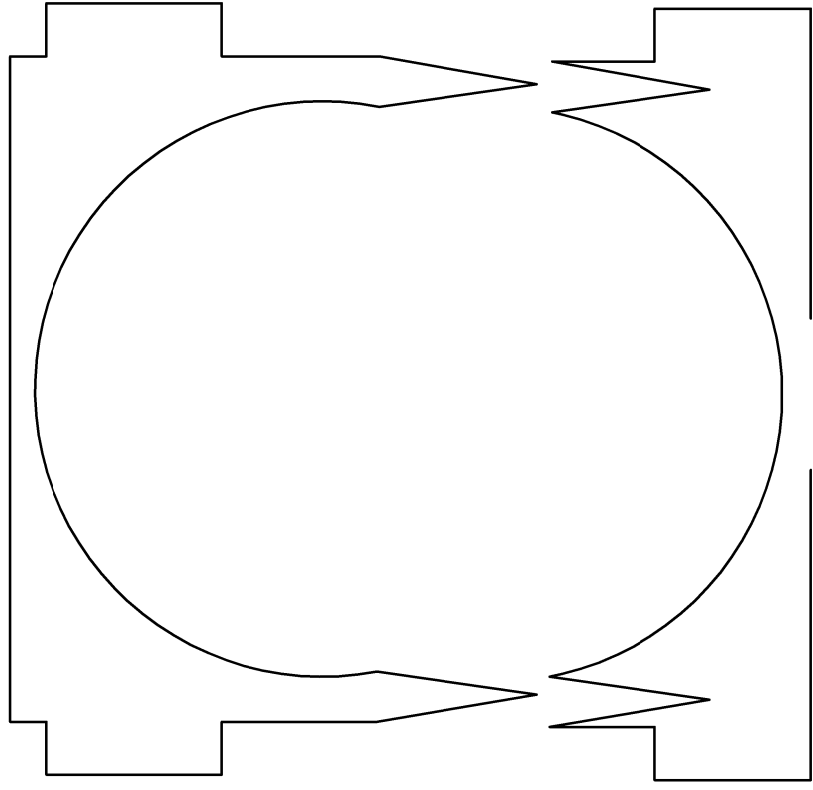
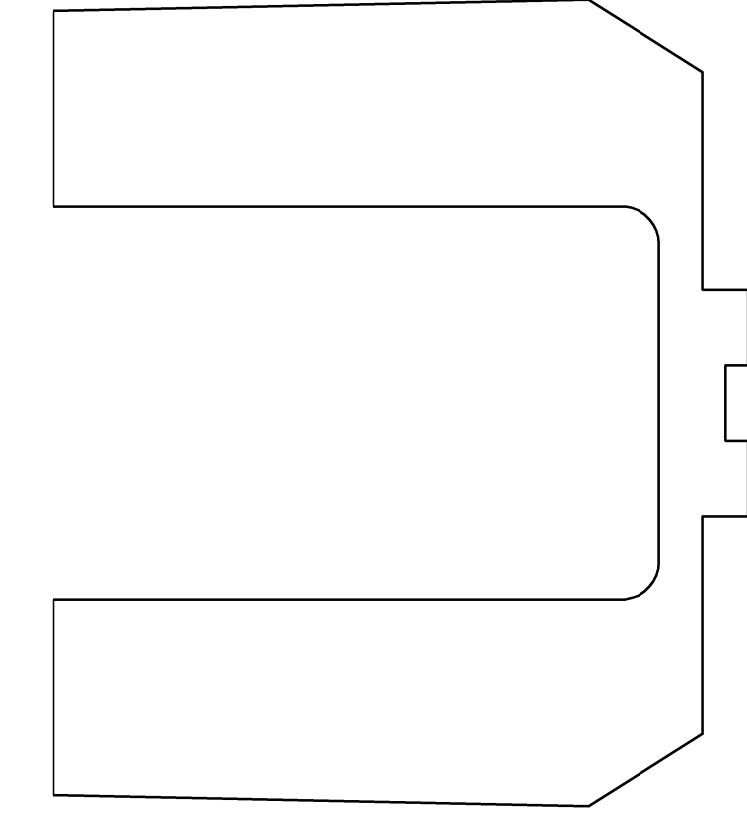
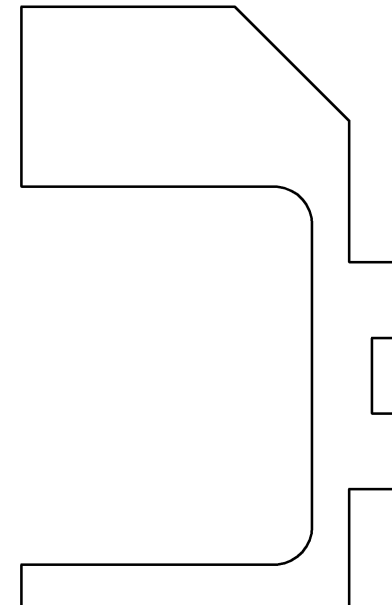
Spant 2

Spant 3

Spant 5

Spant 6

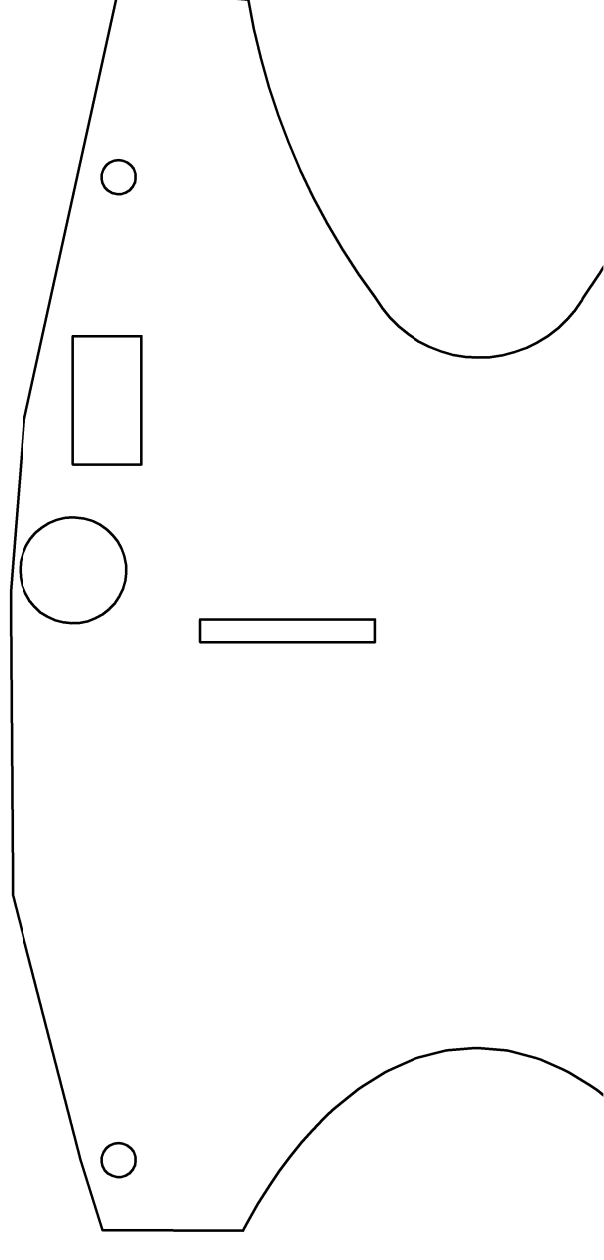
Spant 7 - Rumpfabschluss



2x Verstärkung Seitenwand - Triplex

te oben vor Cockpit - Balsa 10 mm

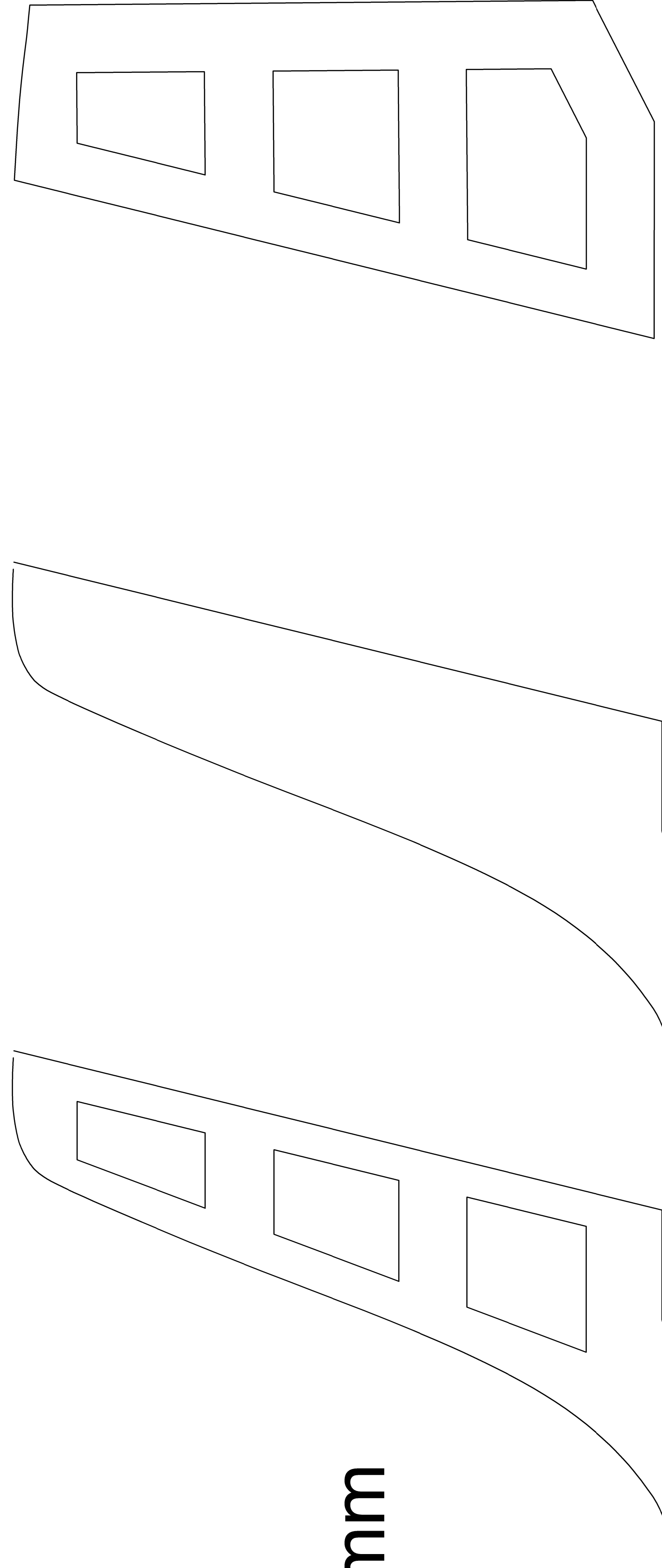
mit Dübellöcher nur zur Info (kein separater Teil)



Schräger Spant an Frontseite Cockpit - 8 mm Balsa

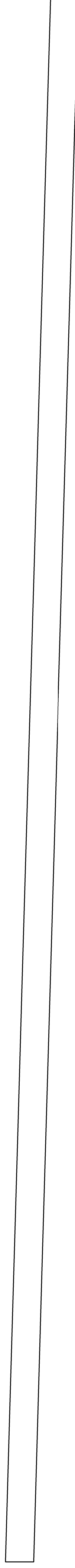
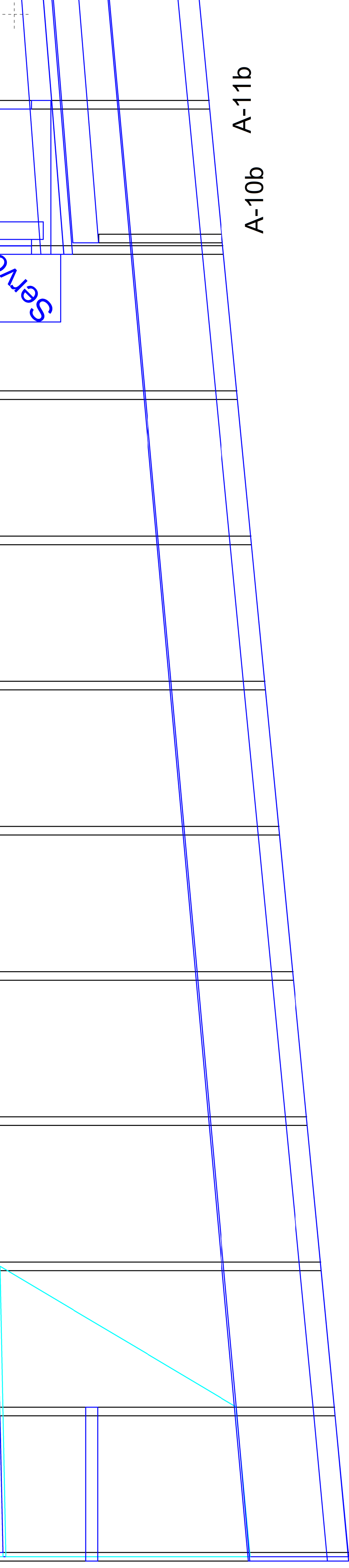
# Leitfläche und Seitenruder

Balsa 5 mm    2x Seitenverkleidung    Seitenruder schräg  
Balsa 1,5 mm    abschleifen - Balsa 8 mm

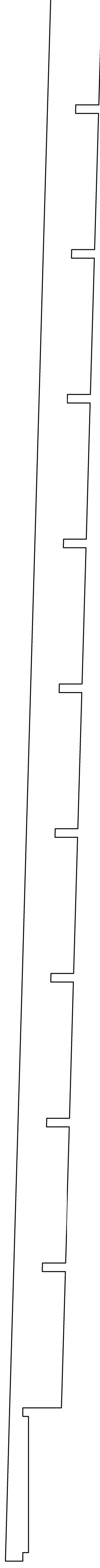


x 2 mm

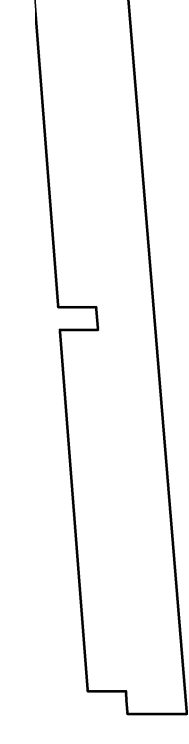




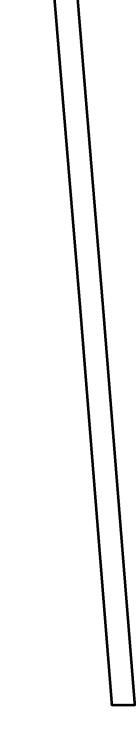
Rippenkamme bei Nasenleiste b



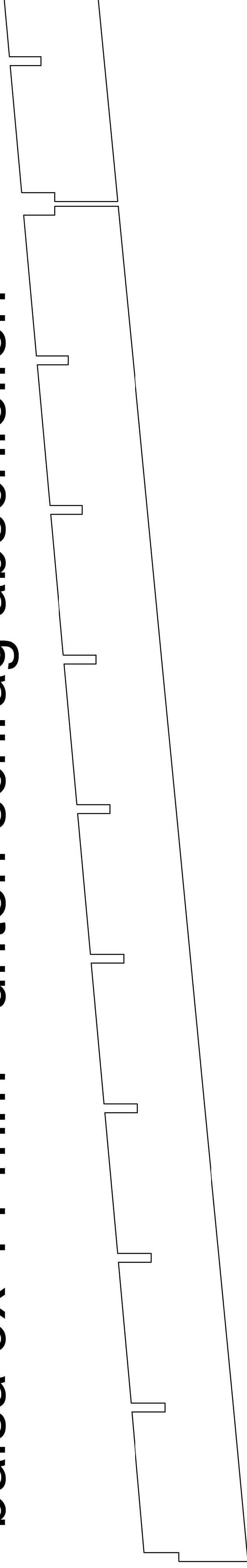
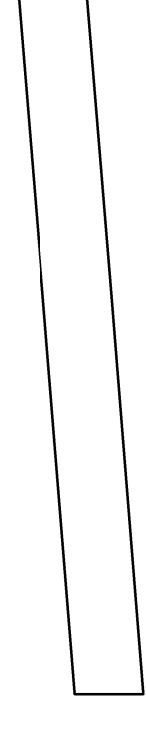
Rippenkamme vor Querruder balsa 2 mm



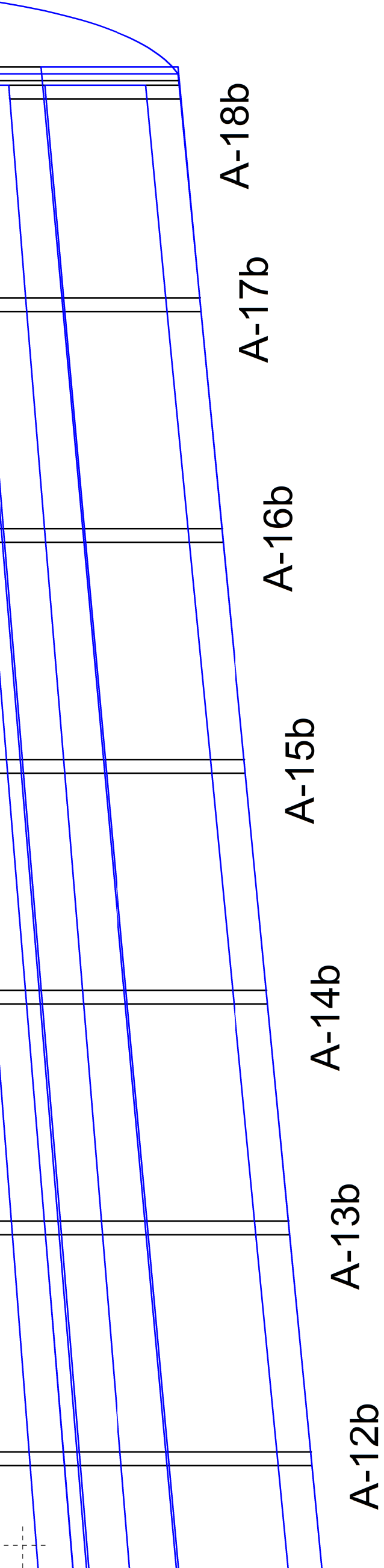
Querruder - Feste Leiste balsa 3x 12 mm



Querruder - Leiste am beweglichen Teil  
balsa 9x 11 mm - unten schräg abschleifen



Endleiste Aufdoppelung oben und unten  
balsa 2 mm weich 2x pro Flügel



A-12b

A-13b

A-14b

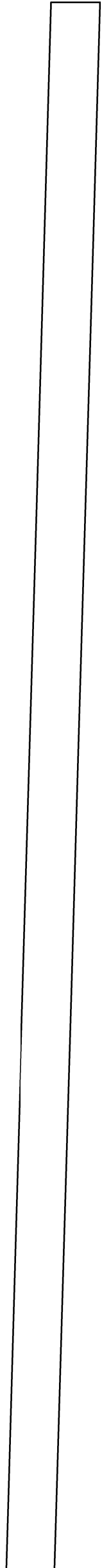
A-15b

A-16b

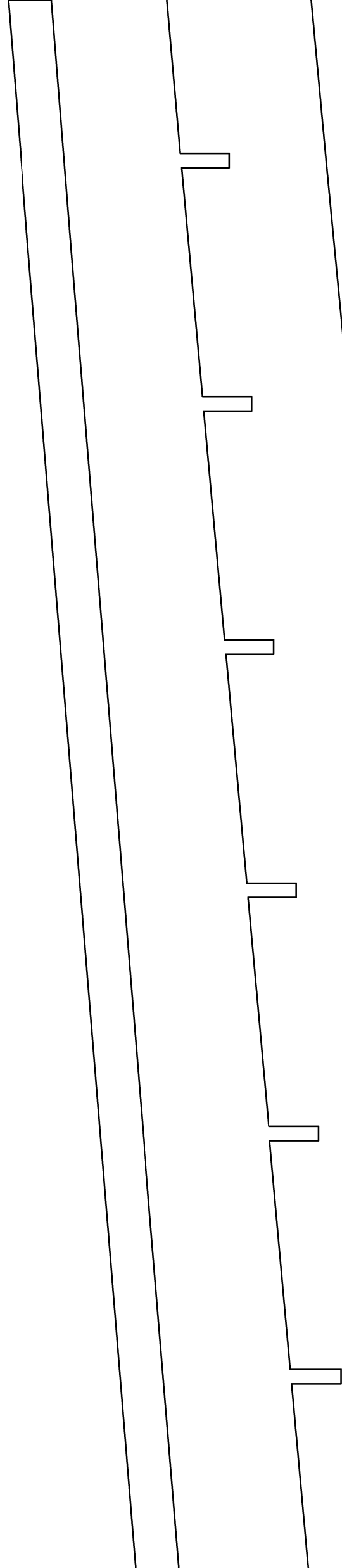
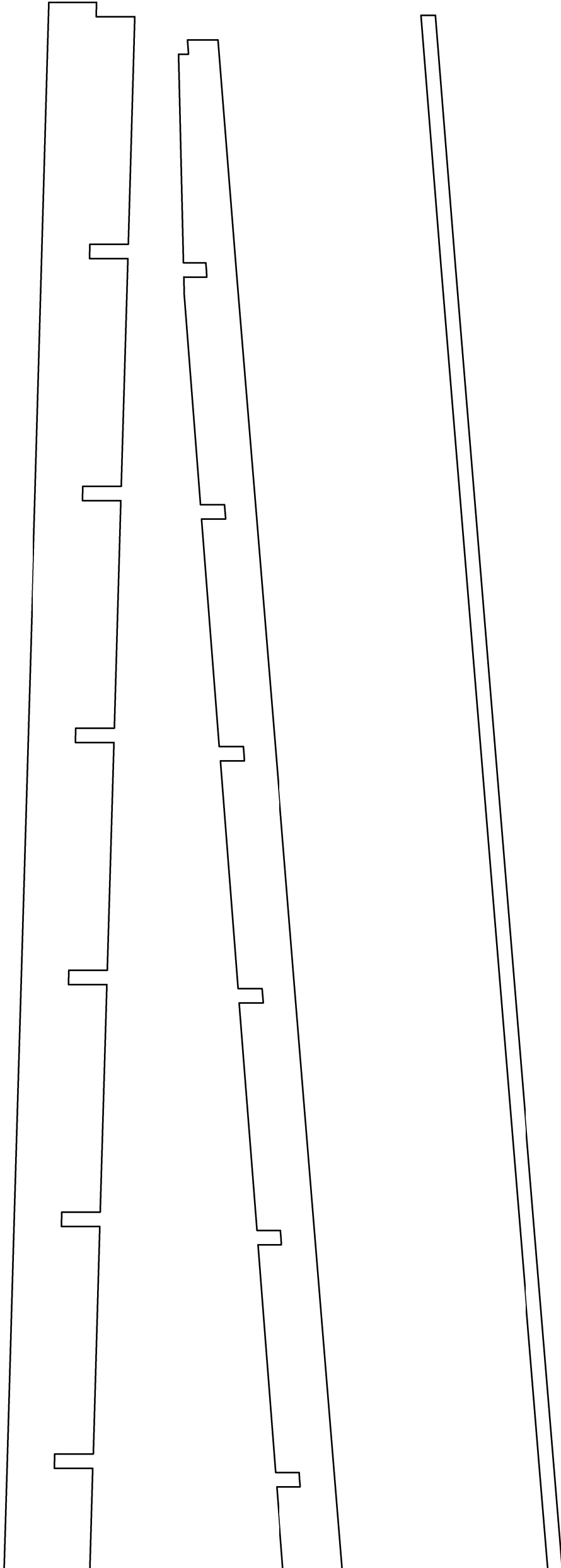
A-17b

A-18b

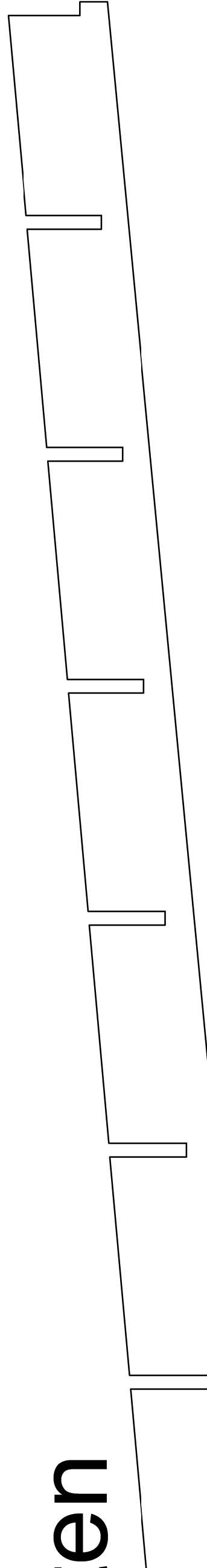
## Nasenleiste - balsa 10x 12 mm



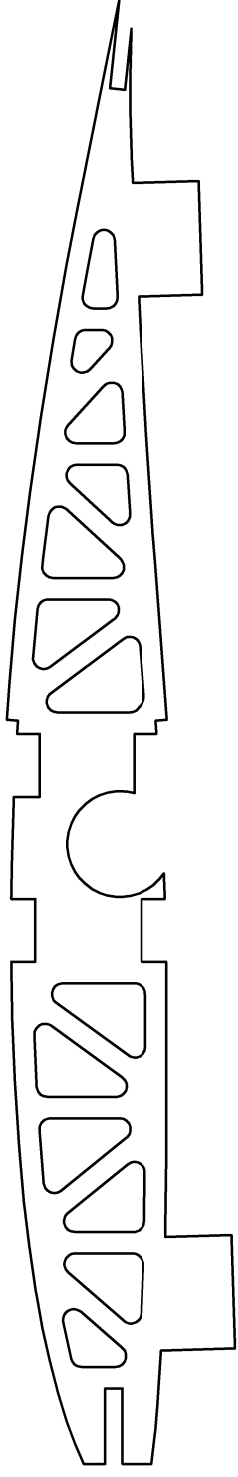
## balsa 2 mm



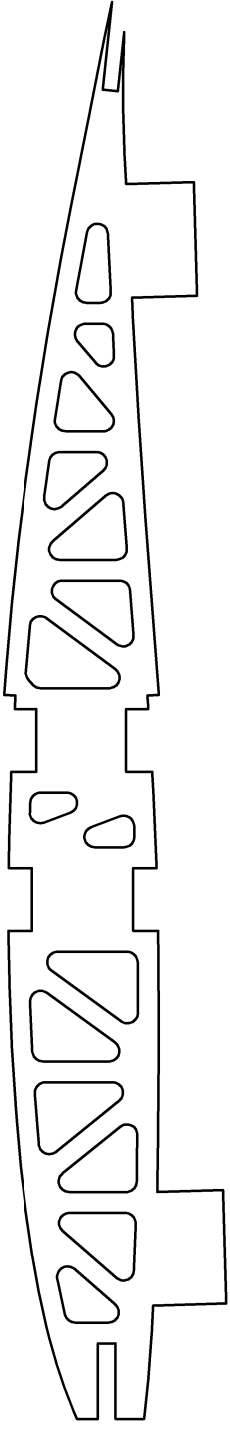
## Endleiste balsa 2 mm hart



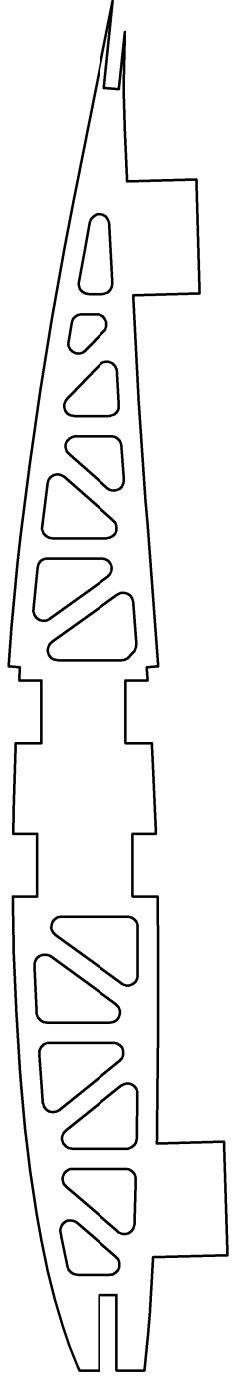
en



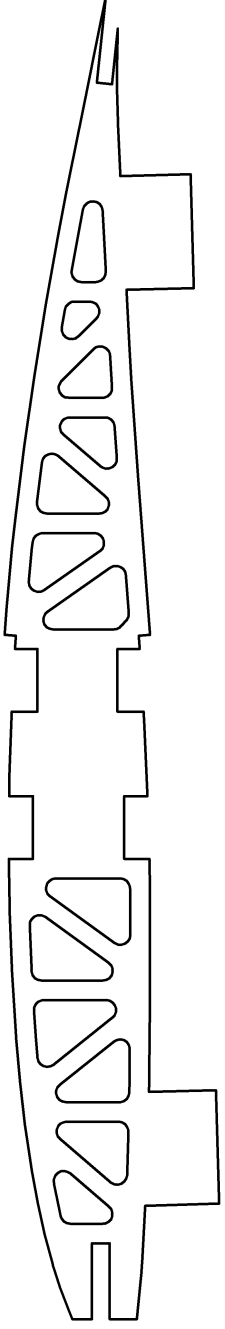
A-5



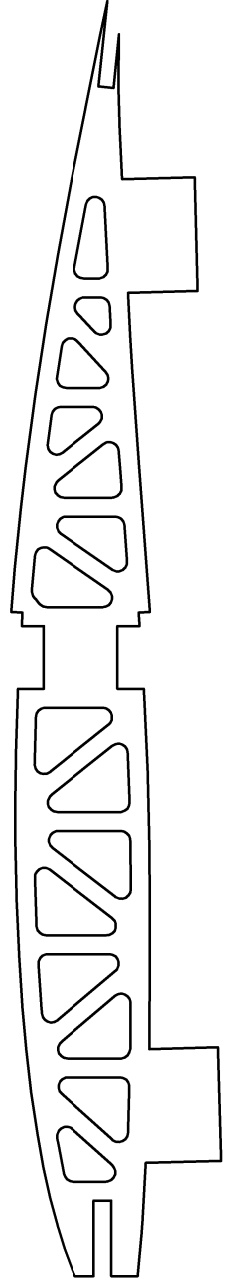
A-6



A-7

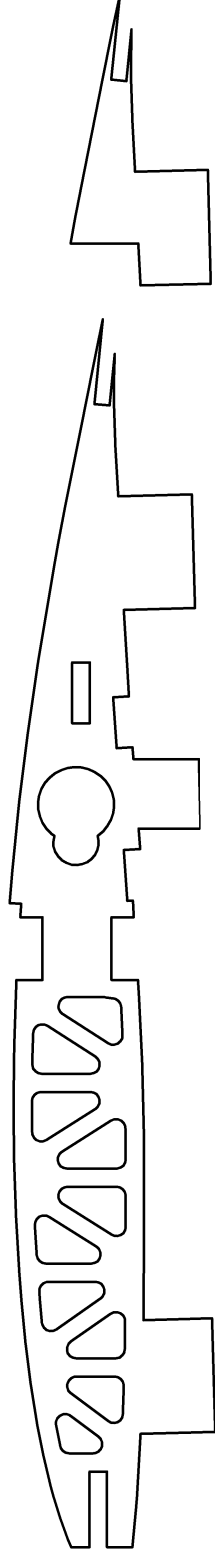


A-8



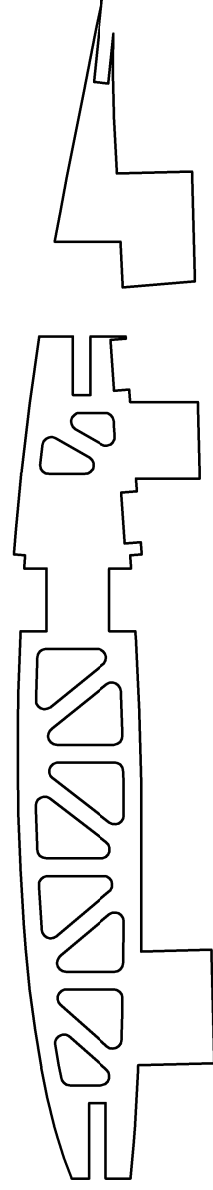
A-9

Ausschnitt für Servokopf an benutzen Servotyp anpassen



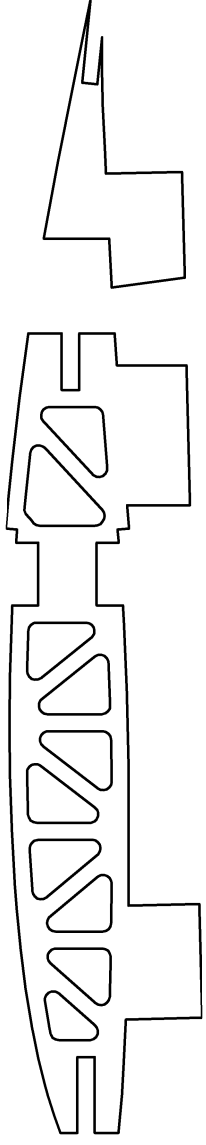
A-10a

A-10b



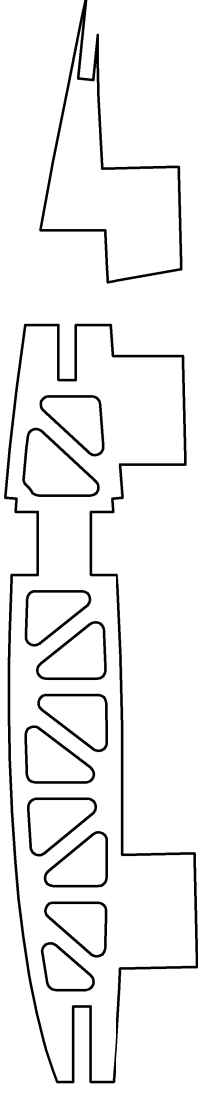
A-11a

A-11b



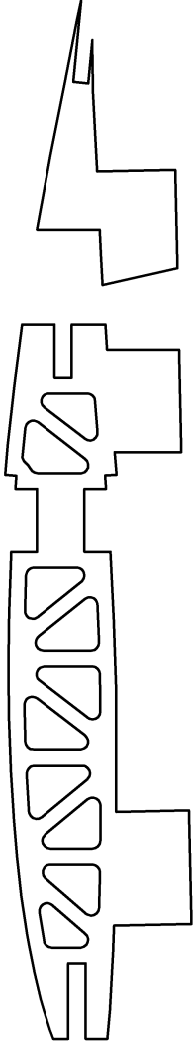
A-12a

A-12b



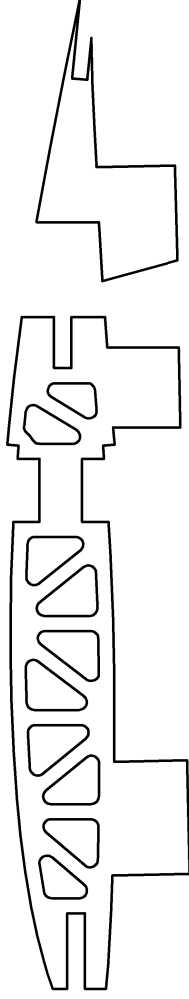
A-13a

A-13b



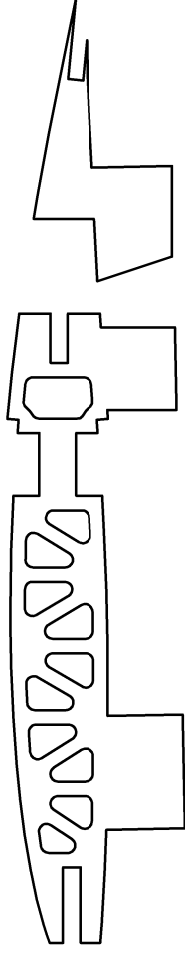
A-14a

A-14b



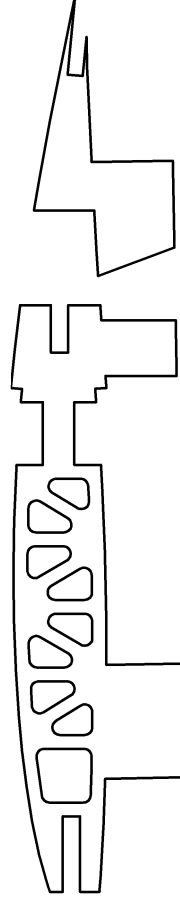
A-15a

A-15b



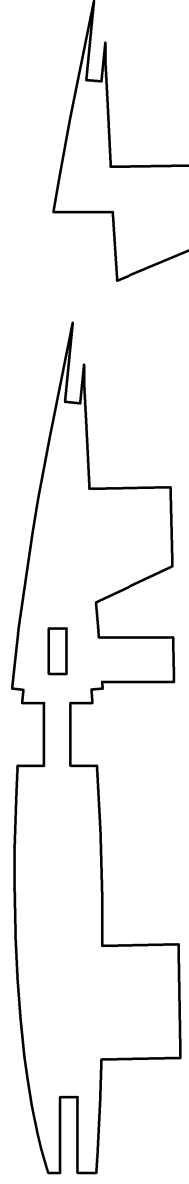
A-16a

A-16b



A-17a

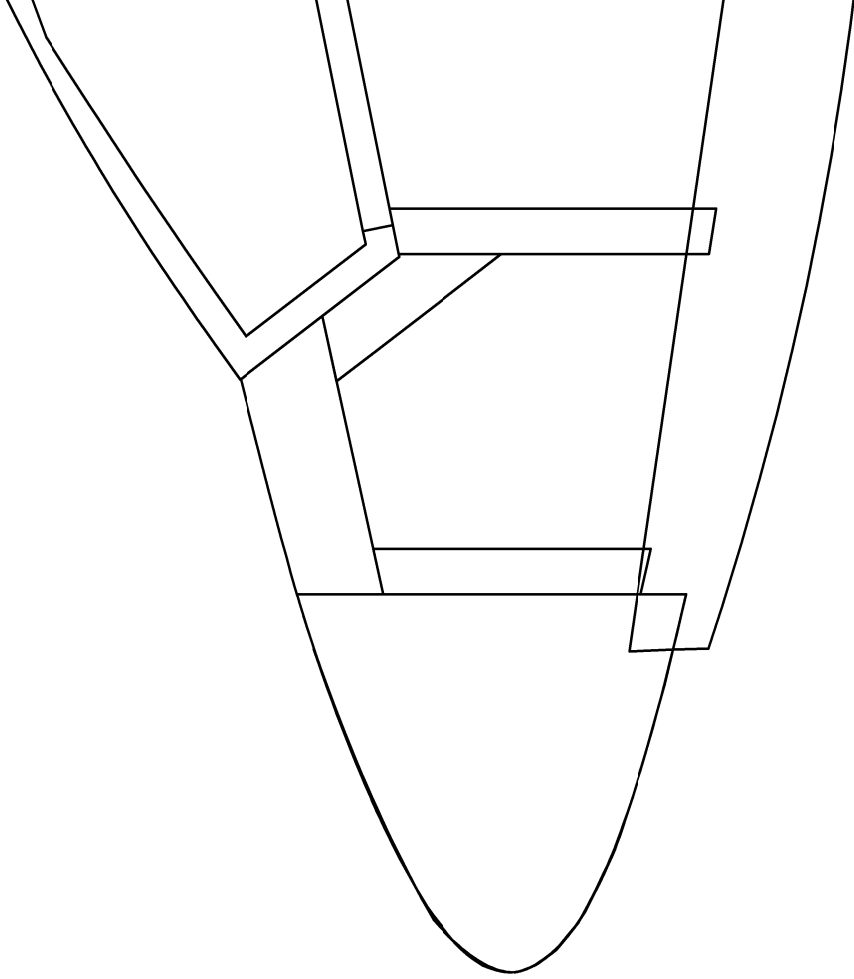
A-17b



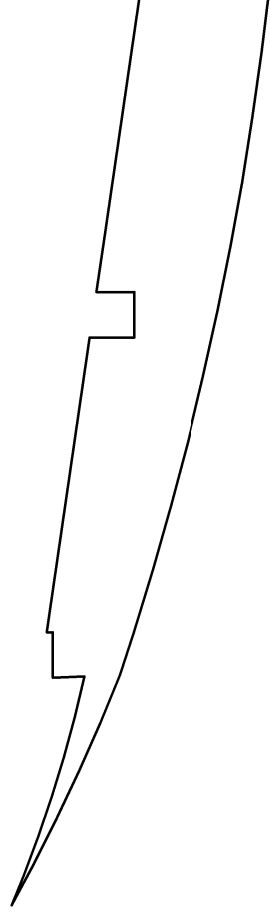
A-18a

A-18b

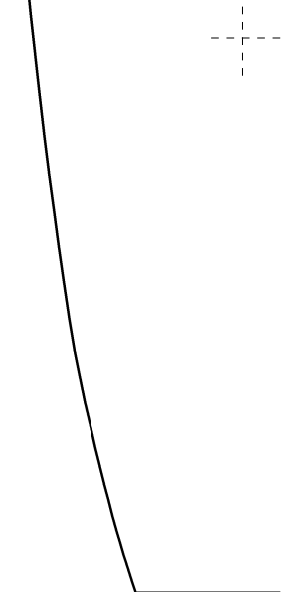
## Längsdurchs



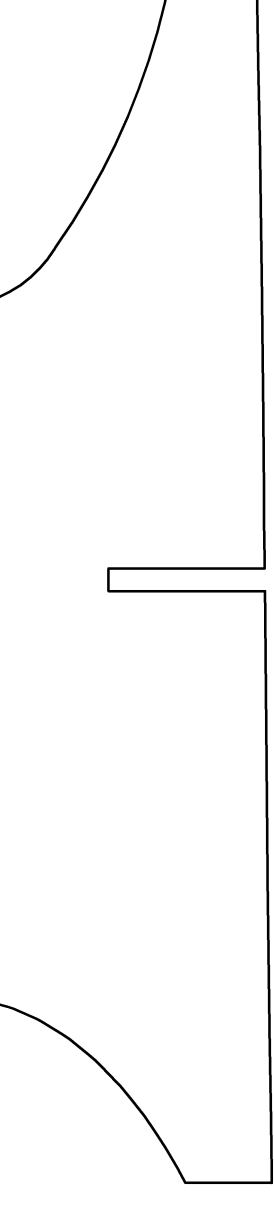
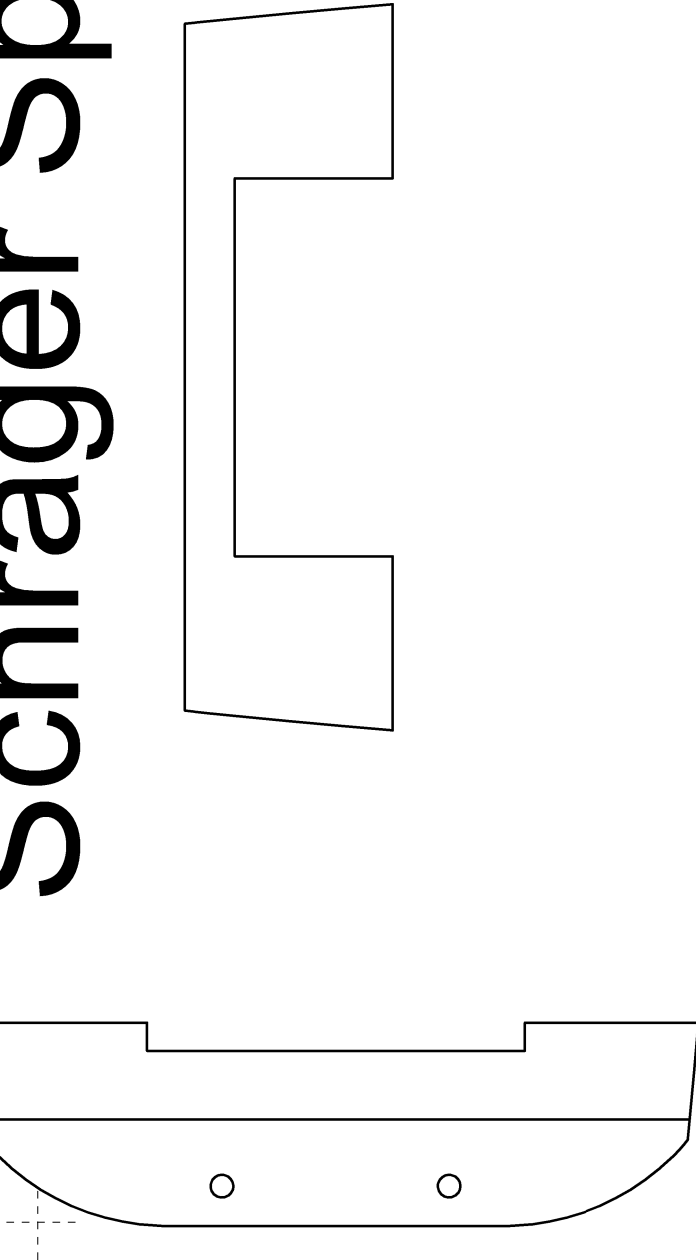
## Kufe - Sandw



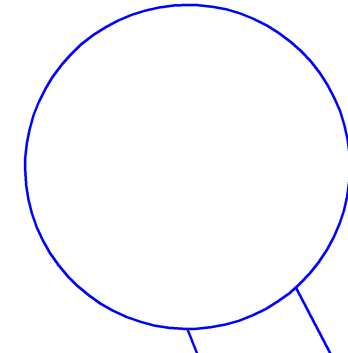
## Rumpfbo



Schräger Spant an Frontseite Cockpit - 8 mm Balsa

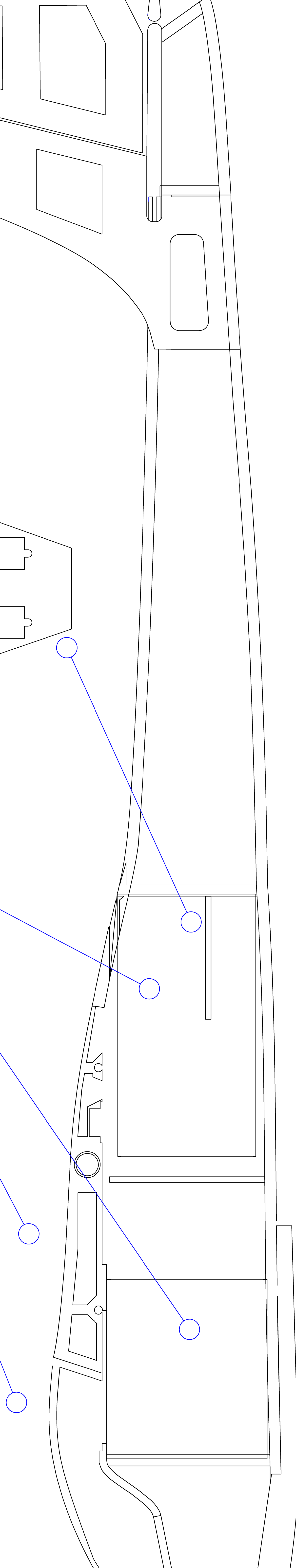
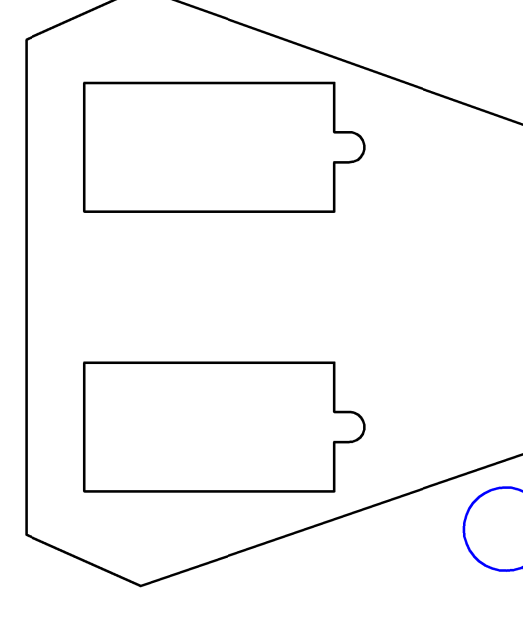


3D-Teile (STL-Format): Cockpit, Rumpfflügelverbindungsteil, EDF



Servoplatte triplex 3 mm

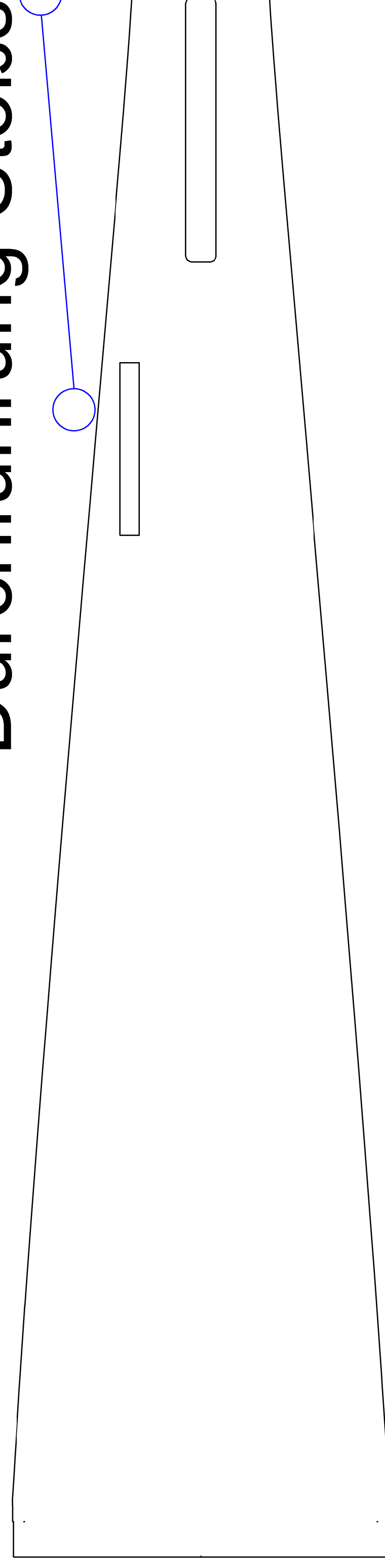
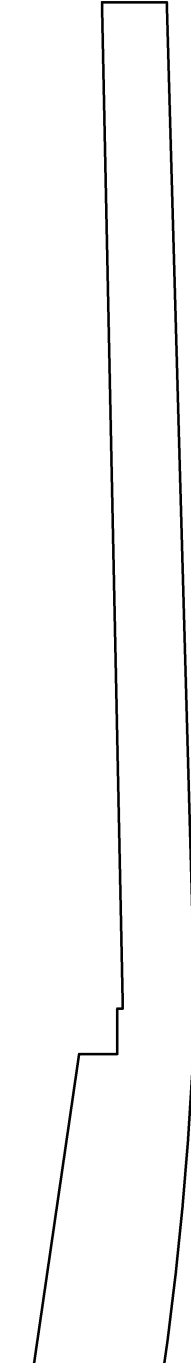
schnitt Rumpf



wich Triplex-Balsa 10 mm

Oberseite Rumpf hinten - Balsa 6 mm

Durchführung Stoßstange

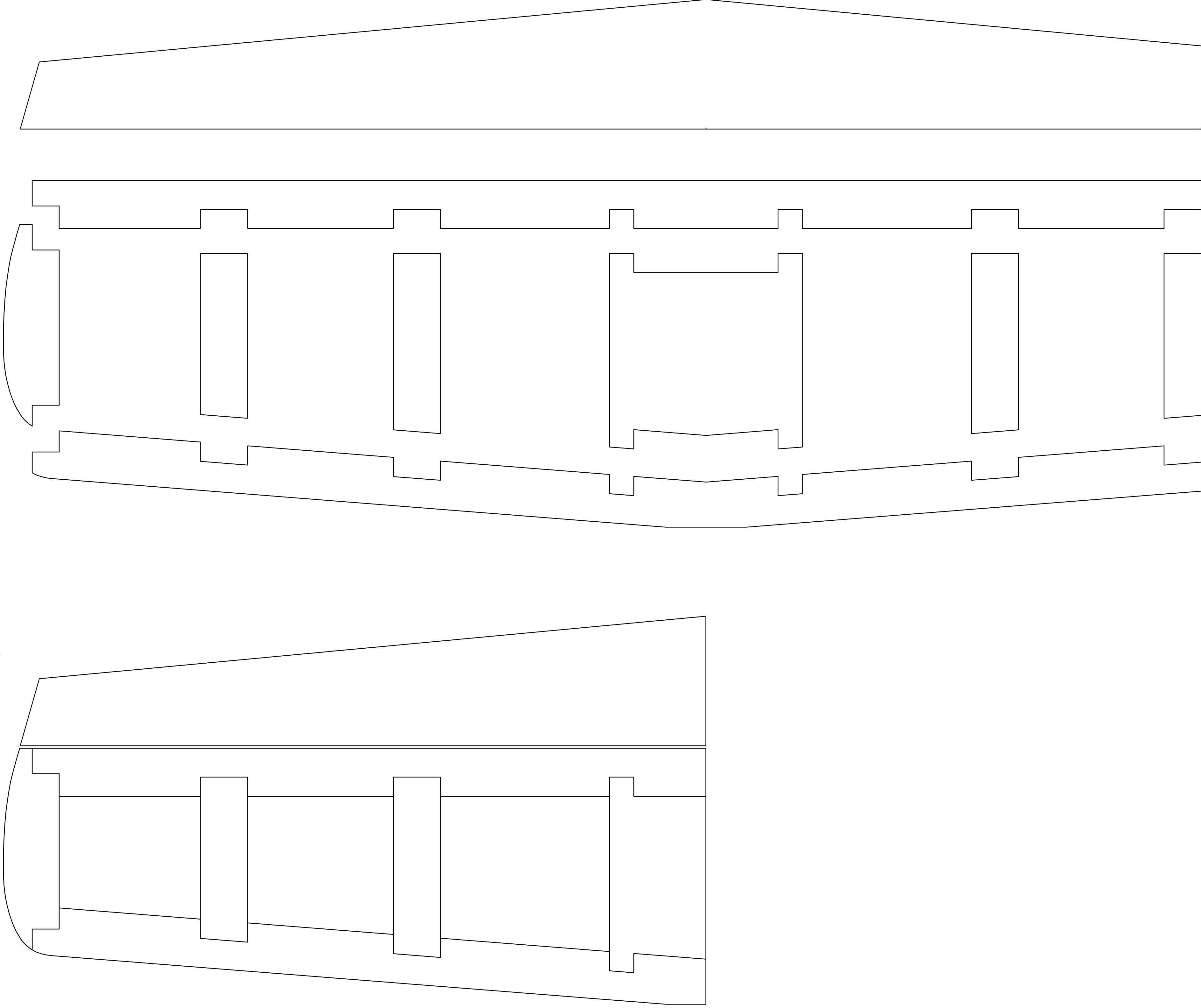


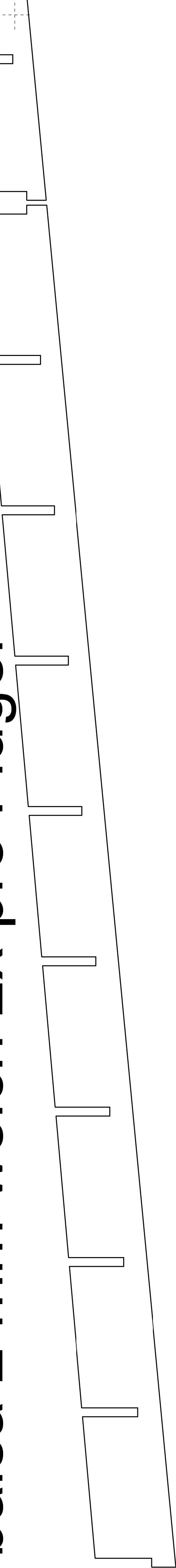
oden - Balsa 6 mm

# Stabilisierungsfläche und Höhenruder

## F-Luftkanäle

Höhenruder - Zusammengebaut Balsa 8 mm

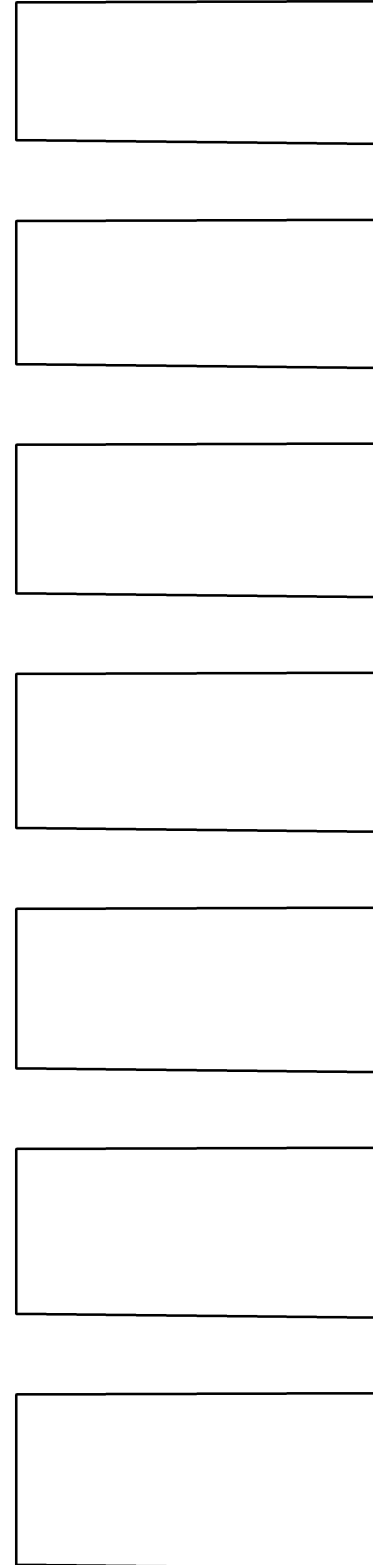




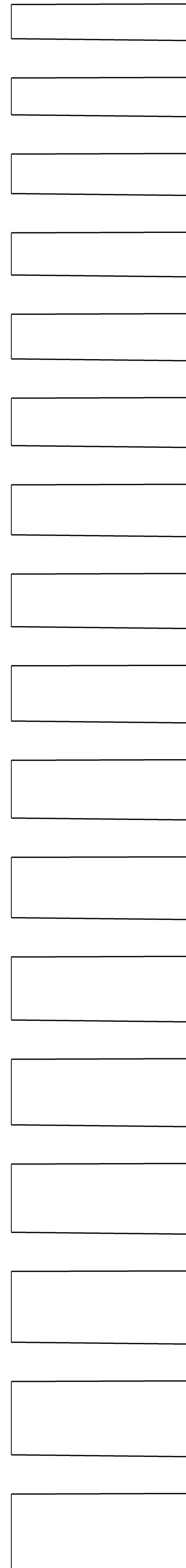
Abdeckplatten D-Box am vorderen (kürzeren) Flügelholm

Inneren 4 werden doppelt (vorne und hinten vom Holm) ausgeführt.

Balsa (hart) 2 mm



Abdeckplatten D-Box am hinteren Flügelholm - Balsa (hart) 2 mm





Verkleidung D-Box Balsa 2 mm hart

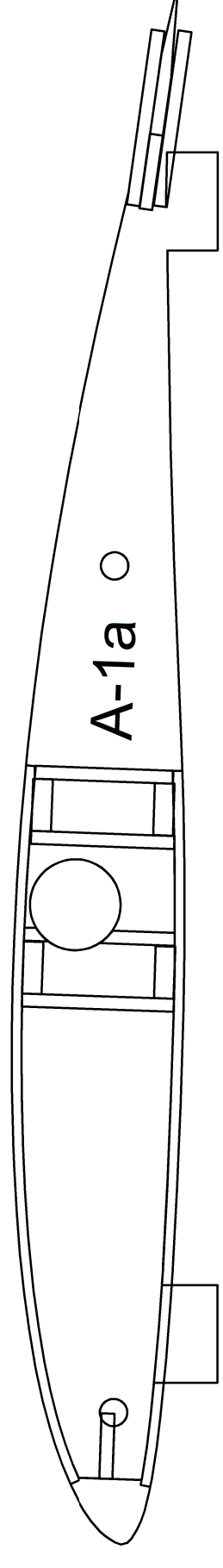
Flügelholme 4x 3x8 mm Kiefer

Endleiste mit 3 Lagen Balsa: Mitten 2 mm hart, oben/unten 2 mm weich

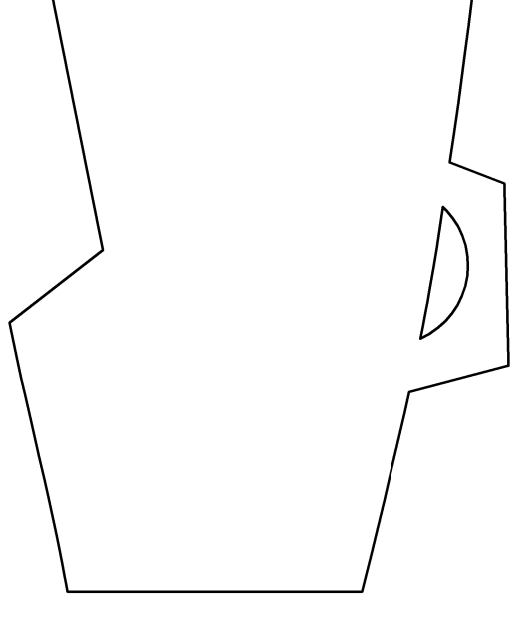
Steckungsrohr 12 mm (evt. mit CFRP gefüllt für härteren Einsatz)

Aufnahme Steckungsrohr im Flügel 14 mm (Innen Ø12 mm), 2x 206 mm

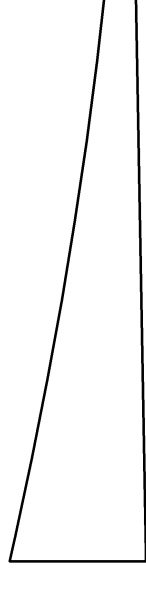
Verdrehsicherung/Flügelfixierung 2x 4 mm CFRP Stab

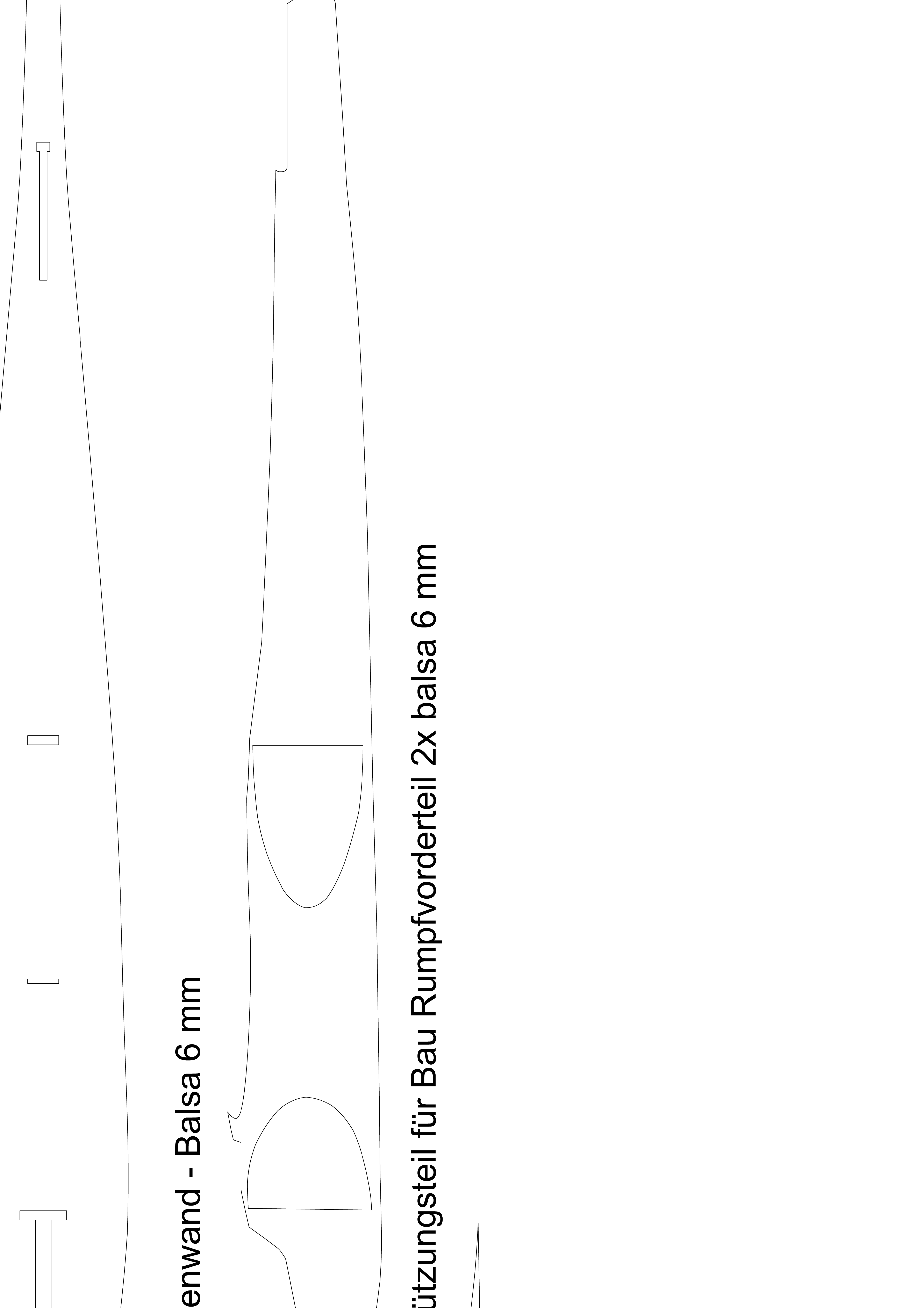


2x Seite



Unterstützung





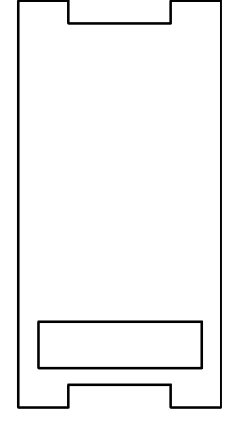
enwand - Balsa 6 mm

stützungsteil für Bau Rumpfvorderteil 2x balsa 6 mm



# Abdeckplatte Öffnung QR-Servohebel

Balsa 2 mm



Flügelspitze - Balsa 3 mm

